



# SI Capabilities Launch Kit - PlantPax Capability

expanding **human possibility**®



PUBLIC



# Agenda

1

Capability and  
Credentials  
Review

2

Access to RAU

3

Access to  
Seismic

4

Enablement  
Platform  
Overview

# PlantPax Capability Guidelines

## VALUE GAINED

- Recognized relationship with leading automation provider
- Capability achieved identified in RA partner locator
- Sales and Marketing support
- Access to industry experts

## QUALIFICATIONS NEEDED

- Experience delivering Rockwell Automation control solutions and/or committed to building required competencies to deliver Rockwell Automation Solutions
- Completion of Visualization and Control capabilities
- Desire to differentiate
- Required resources identified
- Successfully completed all required training and project deployment submitted for audit

## SKILLS ACQUIRED

- Understand overall PlantPax philosophy
- Apply Process Objects and new features in the PlantPax 5.0 library
- Understanding of network architecture and how to size a system using PlantPax System Estimator
- How to apply the graphic framework and how it can accelerate your HMI development
- Ability to implement a project for a customer in the Process space and ensure successful deployment

Program Level	Bronze	Silver	Gold	Platinum * INVITATION ONLY *
Capability	Capabilities - 1 Credentialed resources per Capability - 1	Capabilities - 2 Credentialed resources per Capability - 2	Capabilities - 3 Credentialed resources per Capability - 3	Capabilities - 4 Credentialed resources per Capability - 4

# Credential Requirements for the PlantPax Capability

What is required to obtain the PlantPax Capability?

- ❑ SI Program qualifications must be met
- ❑ Prior completion of Visualization and Control capabilities required
- ❑ All required training to be completed and successful deployment submitted for audit
- ❑ Program required resources trained (example: Silver – 2 resources)
- ❑ PlantPax capability credentials are valid for two years
- ❑ **Year 1**– Complete all required training modules and **if applicable**, pass assessment with a score of 80%
- ❑ System Integrator collectively to obtain minimum number of PDU's based on level (October 1<sup>st</sup> to September 30<sup>th</sup>)
  - ❑ Professional Development Unit = 60 minutes of learning
  - ❑ Platinum – 40, Gold – 30, Silver – 20, Bronze – 10
  - ❑ PDU qualified options include Automation Fair, RAOTM, Learning Plus, ThinManager certification, webinars, RAU modules, and OnCourse labs



# DCS/PlantPax Capability Requirements

Requirements to Gain and Maintain Program Recognition

## Competency Requirements

Individuals must complete one of the appropriate PlantPax 5.0 training tracks below:

- **Experienced PlantPax 4.5/4.6 User** (have previously completed PRS019 or PRS019SI)
  - Advanced PlantPax 5.0 Training (no charge training through RAU)
    - PlantPax 5.0 Sizing and Architecture (RAU, 2-4hrs)
    - HOTT Spots (RAU, 1-2 hrs)
    - On-Demand Training (RAU, 8-24 hrs)
    - How To's - System Verification and Deployment Recommendation (videos available in RAU, 60 min)
- **New PlantPax User**
  - PRC-201 PlantPax 5.0 System Design Course (fee based)  
*PRC-201 is the PlantPax 5.0 replacement of PRS019/PRS019SI*
    - Instructor-led (SI Choice, 4 days)
    - E-Learning (PRC-201-EL, Learning + Subscription, self-paced)
      - \* Lab time can be scheduled through your RA account manager
  - How To's - System Verification and Deployment Recommendation (RAU, 60 min)

## Successful Plan Completion

*Must be completed annually*

Must have completed an annual Process success plan with co-managed objectives and has met with local Rockwell Automation sales representatives at minimum once per quarter to review and update.

## Successful Deployment & Audit

(1) Successful self-deployment of a **registered** PlantPax 5.0 project that passes the System Verification and Deployment Recommendation Checklist audited and approved (additional details on slide 9). PlantPax projects are registered leveraging the System ID and registration tools provided by Rockwell Automation.

## On Going Minimum Annual Expectations

(1) Successful self-deployment of a **registered** PlantPax 5.0 project that passes the System Verification and Deployment Recommendation Checklist audited and approved by the Rockwell Automation PlantPax project review team. PlantPax projects are registered leveraging the System ID and registration tools provided by Rockwell Automation.

Individuals on staff that remain current with all existing and future competency requirements – depends on program level

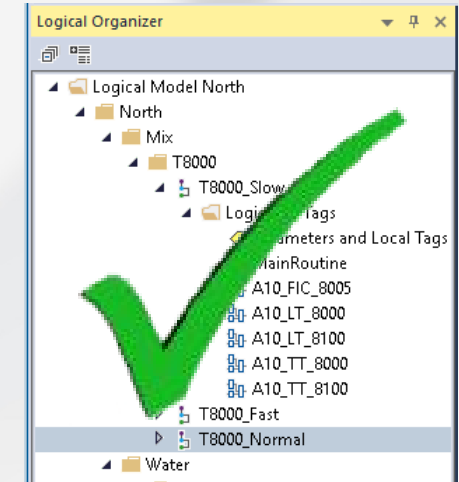
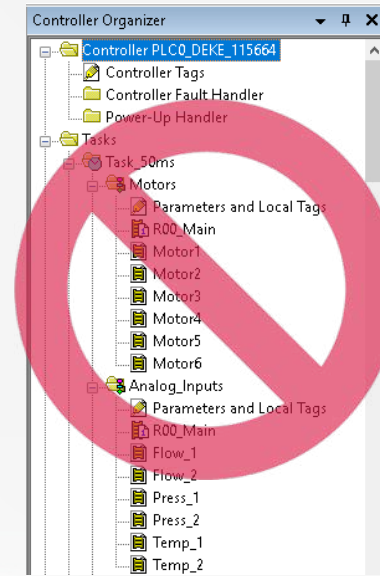
# PlantPax Audit Requirements

- Complete the PlantPax System Estimator (PSE) for the system and implement the system as defined in the PSE.
- At least 1 controller within the system is a P\_Controller with a minimum of 200 IO points and the embedded firmware instructions are utilized for the controllers IO.
- Utilize the HMI Graphics Framework as outlined in the [Rockwell Automation Library of Process Objects](#). (Chapters 2 & 3)
- Complete the PlantPax Verification Tool found in the [PlantPax DCS Configuration and Implementation User Manual](#). The Design Recommendations Tab of the PlantPax Verification Tool must be followed and **some** of the specific items within it include:
  - HMI Application developed based upon the ISA 101 Level 1 thru Level 4 Organization principles.
  - Logical Organizer folders must be used within controllers to align with the Level 1-4 organization used in the HMI. Controller is organized by process areas, NOT by device type – ie. Do not program all motors in 1 program.
  - Each Level 3 Display has a corresponding Logical Organizer folder in the controller(s). Each Level 3 Logical Organizer folder contains a program(s) associated to a specific Level 3 P&ID type display.
  - Devices (Motors, Valves, Analog Inputs, etc.) must use Rockwell's Control Strategies implemented within Function Block – 1 device/Routine. Devices that appear on a Level 3 display are programmed within the associated Programs within the Logical Organizer dedicated to that specific Level 3 display.
  - Using PlantPax tools, generate/configure alarms that are automatically grouped based upon the Logical Organizer within the controller(s).
  - HMI Display navigation configured to associate each button to annunciate alarm status for the buttons' associated display.

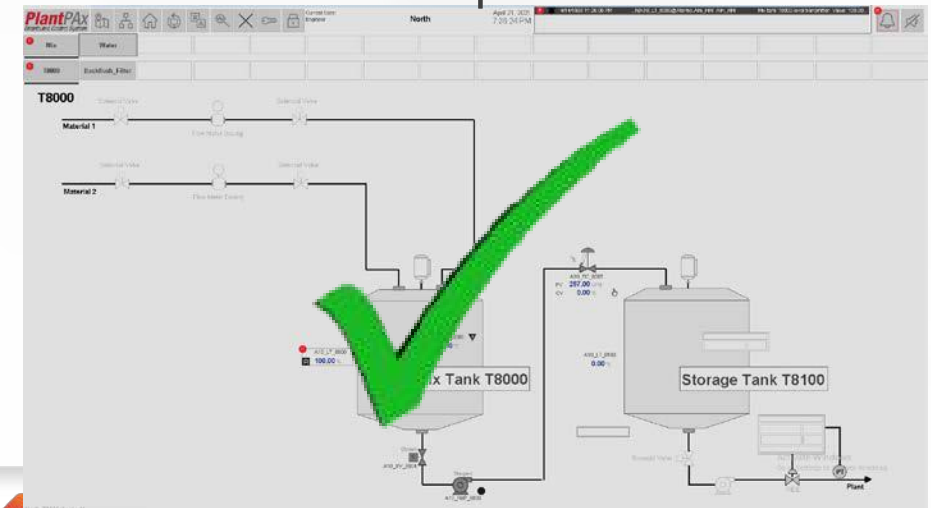
Register the PlantPax system by obtaining a PlantPax System ID

PUBLIC Copyright ©2021 Rockwell Automation, Inc.

## Controller Organization



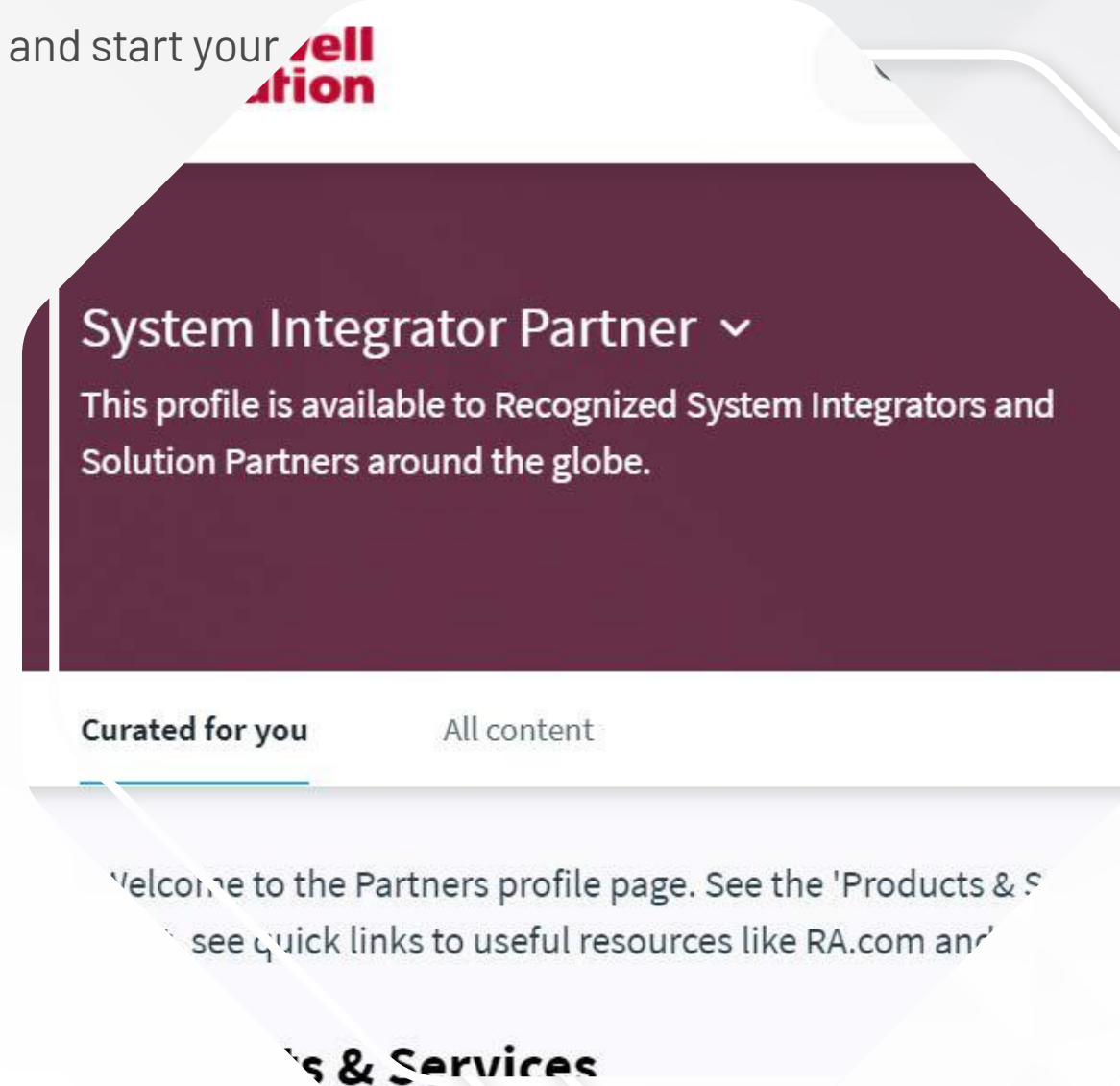
## PlantPax HMI Graphics Framework



# Access to Seismic

Log on to Seismic to access the System Integrator Landing Page and start your commercial learning today!

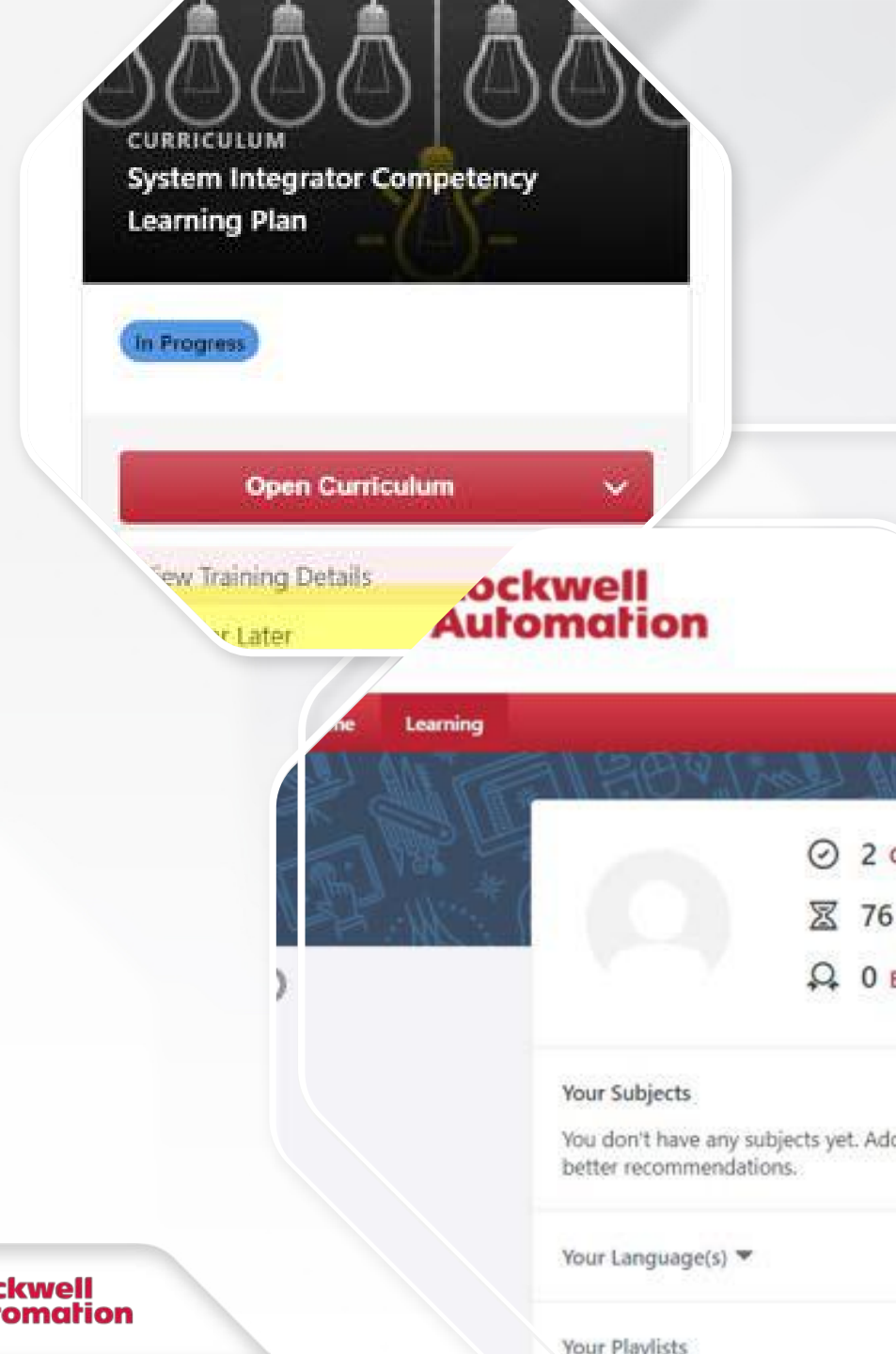
- Visit <https://ra.seismic.com> and fill out the Request Access form.
- For your role, select "System Integrator Partner" which will automatically send the request to RSChannel for confirmation that they are in fact a channel partner.



# Access to RAU

Log on to Rockwell Automation University to access the System Integrator Learning Plan and start your technical training today!

- Request access from your RA Account Manager and allow a week to process
- Go to <https://rockwell.csod.com> and log in
- Username is the users company email address
- Enter password (or click the Forgot Password link and follow the instructions)
- Link to training: [System Integrator Competency Learning Plan](#)
- Open the "Featured" curriculum from the home page
- Once the training is "In Progress" reference "[How to Register](#)" pages 1 and 2 and "Save for Later"





# System Integrator Enablement Platforms



Central Hub for all things commercial content

Find, share, and leverage sales content, materials, and subject matter experts

Be prepared for customer conversations

Share best practices, insights, and knowledge to help drive sales

Request access to Seismic by visiting <https://ra.seismic.com>



Dedicated Learning Plan for System Integrators

Different Modules per Discipline & Capability

Updated regularly with latest training modules

Request access through your RA Account Representative



Cloud based system where Partners can experience products remotely and securely for virtual, on-demand demonstration, training, and learning with Rockwell Automation software and hardware

From wherever and whenever

Request access through your RA Account Representative

# System Integrator Enablement Platforms



Access all e-learning content and participate in unlimited virtual classroom sessions

Provides hybrid of self-paced study and interaction with our expert instructors

Take more than twenty of our most popular courses

Gain access by purchasing your annual subscription on the software portal

\*Incentive dollars permitted



Learn Online Subscription for ThingWorx certification

Gain access by purchasing your annual subscription on the software portal

\*Incentive dollars permitted



Access to a self-paced, on-demand ThinManager certification using downloadable labs that cover all major aspects of the ThinManager platform

Download and install ThinManager software, complete the self-paced labs, and upload the ThinManager configuration file for grading and certification

No login required. Access through RAU