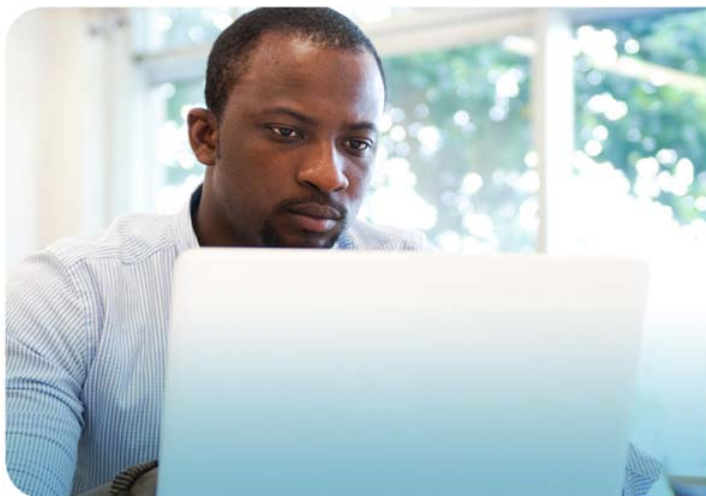


Virtual Classroom Course Description

Arc Flash Awareness



Course Purpose

This course will teach you to assess arc flash hazards and act to mitigate them by selecting appropriate PPE and determining protection boundaries. You will also learn how to use NFPA-70E 2009 and calculation methods to determine protection boundaries. This course also provides some of the key requirements necessary to become a “qualified” person as defined in OSHA 1910.269, 332, 333, and NFPA 70E®, such as:

- Determining minimum approach distances
- Being capable of using special precautionary techniques, PPE, insulating and shielding materials, and insulated tools
- Receiving safety training to recognize and avoid hazards

Course Number: VC-SFT106

Registration is required at least 2 weeks before the first session to allow time for shipping the course materials.

Session 1: Arc Flash Awareness: Required PPE

Session 2: Arc Flash Awareness: Thermal and Shock Boundaries

Session 3: Arc Flash Awareness: Bolted Fault Calculations

Session 4: Arc Flash Awareness: Arc Fault Calculations

Who Should Attend

Individuals required to work in accordance with NFPA 70E or who will be exposed to work areas designated by a flash protection boundary should attend this course.

Prerequisites

The following prerequisites are required for this course:

- Experience distinguishing exposed live parts from other parts of electrical equipment
- Determining nominal system voltage of exposed live parts
- Skills and knowledge related to the construction and operation of electrical equipment and installations

Technology Requirements

- A computer and phone are required. For minimum computer requirements for the virtual classroom tool, please visit:

<http://support.webex.com/support/system-requirements.html>

- A calculator must be available for Session 2 and a scientific calculator must be available for Session 3 and Session 4. You can use the calculator found in Microsoft Windows® >Programs>Accessories for all three sessions.

Student Materials

You will receive the following materials to use during the course:

- Arc Flash Awareness Student Workbook (in electronic format to print on your own)
- NFPA 70E 2009 Standard for Electrical Safety in the Workplace (shipped to you after enrollment)

Hands-On Practice

During each session, your instructor will demonstrate how to perform tasks using *NFPA 70E 2009 Standard for Electrical Safety in the Workplace* and a calculator, and you will also practice performing those tasks. Specifically, you will have an opportunity to practice using the tables and formulas in *NFPA 70E 2009* to determine appropriate PPE and to calculate arc flash and shock protection boundaries. In addition, you will practice performing bolted fault and arc fault calculations.

Next Learning Level

For instructor-led training related to other machine safety issues, consider the following courses:

- SAF-SFT110 Confined Space Entry Awareness
- SAF-SFT123 Plant Floor Arc Flash/LOTO/Confined Space Safety

Course Length

Session 1: 90 minutes
Session 2: 90 minutes
Session 3: 90 minutes
Session 4: 90 minutes

Virtual Classroom Learning Activities and Features

Rockwell Automation Virtual Classroom training is delivered by a live instructor using a blended learning style, which includes a combination of PowerPoint presentations, video, and/or animations, as well as interactive practice. Courses can include various learning activities and features:

- Polls/surveys
- Group and private chat
- White board
- Desktop sharing
- Passing control to students
- Break out rooms for small group discussion
- Check knowledge through testing

COURSE AGENDA

Session 1: Arc Flash Awareness: Required PPE

- Arc Flash Hazards and Safety
- Determining Appropriate PPE

Session 2: Arc Flash Awareness: Thermal and Shock Boundaries

- Overview of Protection Boundaries and Safety
- Determining Thermal and Shock Boundaries

Session 3: Arc Flash Awareness: Bolted Fault Calculations

- Overview of Flash Hazard Analysis
- Performing Bolted Fault Arc-Flash Calculations

Session 4: Arc Flash Awareness: Arc Fault Calculations

- Overview of Arc Fault Calculations
- Performing Arc Fault Arc Flash Calculations



IACET CEUs

Session 1 = 0.15 CEUs
Session 2 = 0.15 CEUs
Session 3 = 0.15 CEUs
Session 4 = 0.15 CEUs

To Register

To register for this or any other Rockwell Automation training course, contact your local authorized Allen-Bradley Distributor or your local Sales/Support office for a complete listing of courses, descriptions, prices, and schedules.

Important Registration Information

This course includes a hard-copy of the *NFPA 70E 2009 Standard for Electrical Safety in the Workplace* manual that will be shipped to you after you enroll. Due to shipping lead-times, you must register for this course at least 2 weeks before the first session.

www.rockwellautomation.com

Power, Control and Information Solutions Headquarters

Americas: Rockwell Automation, 1201 South Second Street, Milwaukee, WI 53204 USA, Tel: (1) 414.382.2000, Fax: (1) 414.382.4444

Europe/Middle East/Africa: Rockwell Automation, Vorstlaan/Boulevard du Souverain 36, 1170 Brussels, Belgium, Tel: (32) 2 663 0600, Fax: (32) 2 663 0640

Asia Pacific: Rockwell Automation, Level 14, Core F, Cyberport 3, 100 Cyberport Road, Hong Kong, Tel: (852) 2887 4788, Fax: (852) 2508 1846